

B+G BRIGHTON CAPSULE SINGLE LITTER BIN

Litter Bins » Single Bins



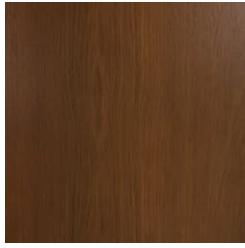
Collection: **Brighton**

B+G BRIGHTON CAPSULE SINGLE LITTER BIN

Litter Bins » Single Bins



Hardwood Australian
Eucalyptus Light Oil



Hardwood Australian
Eucalyptus Dark Oil



Duraslat™ Plateau



Duraslat™ Summit



Duraslat™ Canyon



Duraslat™ Outback



Core Powder-Coat
Coreten Textured



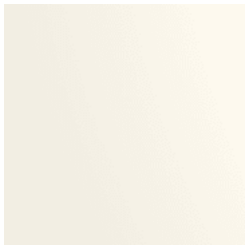
Core Powder-Coat
Charcoal Satin



Core Powder-Coat
Silver Pearl Satin
Metallic



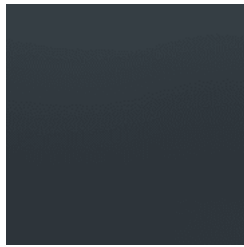
Core Powder-Coat
Black Satin



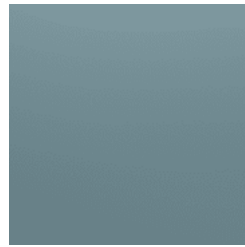
Core Powder-Coat
White Satin



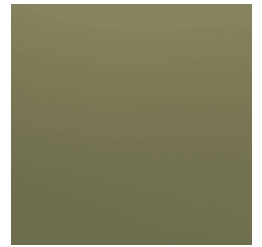
Core Powder-Coat
Bronze Satin Metallic



Signature Powder-
Coat Deep Ocean
Satin



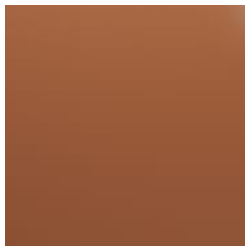
Signature Powder-
Coat Wedgewood
Satin



Signature Powder-
Coat Mangrove Satin



Signature Powder-
Coat Territory Red
Matt



Signature Powder-
Coat Claypot Satin



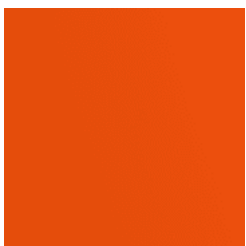
Signature Powder-
Coat Paperbark Satin



Bold Powder-Coat
Sky Blue Satin



Bold Powder-Coat
Yellow Green Satin



Bold Powder-Coat
Pure Orange Satin



Bold Powder-Coat
Carmine Red Satin

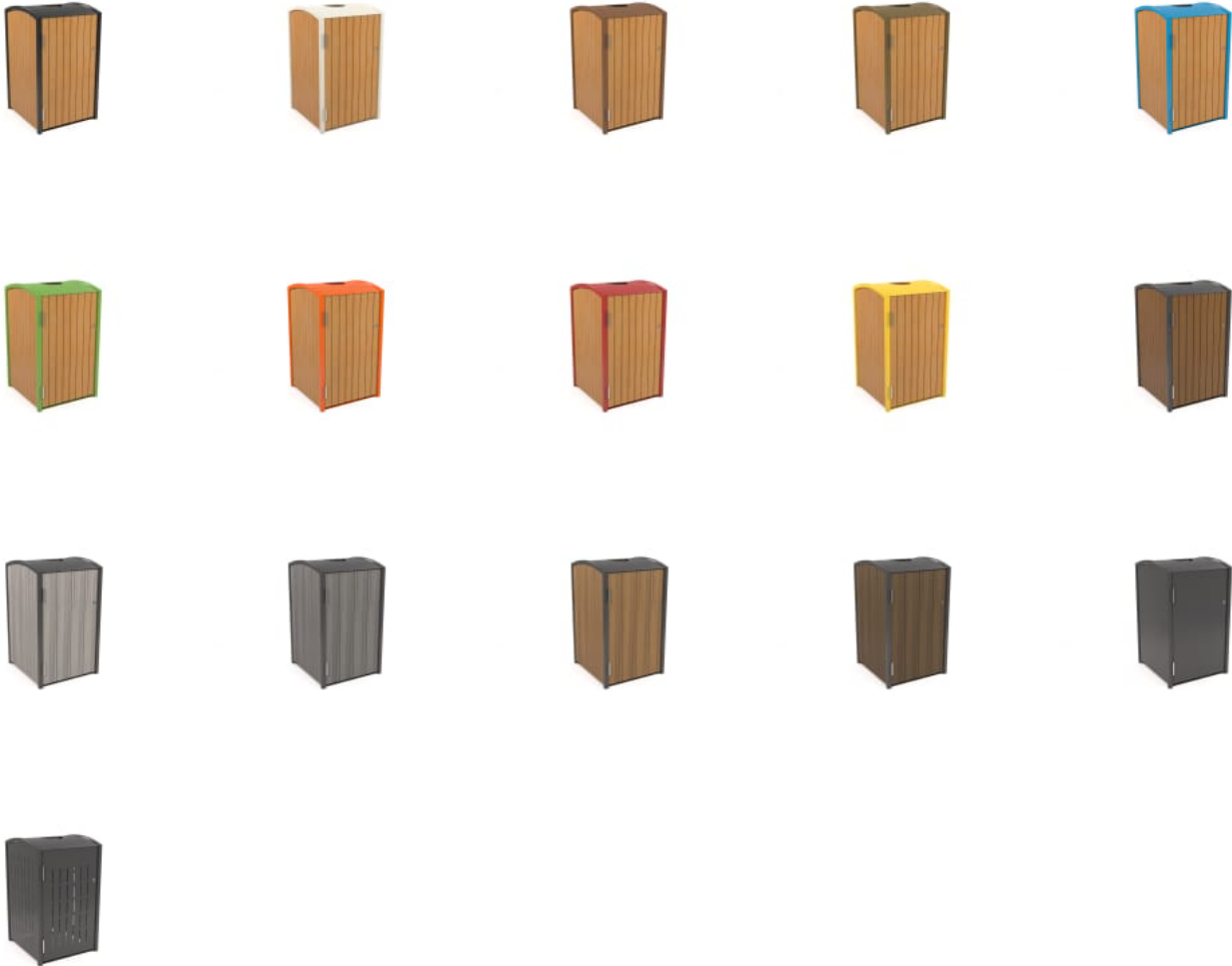


Bold Powder-Coat
Zinc Yellow Satin



B+G BRIGHTON CAPSULE SINGLE LITTER BIN

Litter Bins » Single Bins



B+G BRIGHTON CAPSULE SINGLE LITTER BIN

Litter Bins » Single Bins

Detailed capsule single litter bin design for undercover. Panels in 2 hardwood or 4 Duraslat™ colors, and cut-out designs in 17 powder-coat finishes.

Description The detailed design of the Brighton capsule single litter bin mirrors its functional nature. The exposed steel frame, external hinges and compression lock offer effortless access, while matching panels maximize the 360° visual impact that make it ideal for streetscapes, parks or campuses. Finishes include 2 Australian Eucalyptus hardwood or 4 Duraslat™ colors, and cut-out designs in 17 powder-coat finishes.

Made In USA

Dimensions 26"W x 26"D x 45"H
(660mmW x 660mmD x 1145mmH)

Capacity 32 gal (120L)

Weight

- Hardwood
165lbs (75kg)
- Duraslat™
165lbs (75kg)
- Plain Panel
137lbs (62kg)
- Perforated Panel
132lbs (60kg)

Batten Type

- Hardwood
Australian Eucalyptus
- Duraslat™
Plateau, Summit, Canyon, Outback

Frame Powder-coated steel

B+G BRIGHTON CAPSULE SINGLE LITTER BIN

Litter Bins » Single Bins

Powder Coat

Core

Coreten (textured), Charcoal (satin), Silver Pearl (satin metallic), Black (satin), White (satin), Bronze (satin metallic)

Signature

Deep Ocean (satin), Wedgewood (satin), Mangrove (satin), Territory Red (matt), Claypot (satin), Paperbark (satin)

Bold

Sky Blue (satin), Yellow Green (satin), Pure Orange (satin), Carmine Red (satin), Zinc Yellow (satin)

Signage

Vinyl decal signage for the door panel on request.

Sustainability

Certified Hardwood

Australian Eucalyptus hardwood is sourced from sustainable forests certified by the Program for the Endorsement of Forest Certification (PEFC), the world's largest forestry certification system.

Material Alternatives

We offer sustainable alternatives to hardwood, such as Duraslat™; a mineral-based composite material that contains no Volatile Organic Compounds (VOCs) and is engineered using up to 46% natural filler that is based on a renewable mineral.

Recycled Materials

We locally source our steel. It means we know it uses recycled content and is 100% recyclable.

Low Pollutants

Our powder-coating process doesn't emit VOCs and has Environmental Product Declarations (EPDs) that enable projects to qualify for LEED credits.

Warranty

5-year warranty. View the [warranty](#) for more details.

Lead Time

6-8 weeks

Assembly & Delivery

Shipped fully assembled on pallets.

Fixing Detail

Surface fixed by others. Anchors not included.

How to Specify

Select your size - single
Select your capacity - 32 gal (120L)
Select your frame and top color
Select your panel design and finish
Select your fixing type

B+G BRIGHTON CAPSULE SINGLE LITTER BIN

Litter Bins » Single Bins

Care Instructions

Hardwood

Cleaning

Remove any loose surface deposits with a soft bristled brush and wipe down with fresh water and a non-abrasive cloth.

Oiling

Oiling of timber will postpone natural greying, repel moisture, improve mould resistance, help maintain a smooth surface texture and enhance the grain and colour.

To maintain, lightly sand rough areas of timber and brush on one coat of timber decking oil every 6 months or as required.

Duraslat™

Cleaning

Clean with mild soap and water and use a soft brush to remove any dirt build-up.

Powder-Coat

Cleaning

Carefully remove any loose surface deposits with a wet sponge or soft bristled brush.

Use a soft (non-abrasive) cloth or brush and a diluted solution of mild detergent and warm water.

Ensure surfaces are thoroughly rinsed with clean fresh water after cleaning to remove all residues.

Never use thinners, abrasive cleaning agents, alcohol-based, acid or alkali cleaning agents.

Additional Comments

Panel designs available in hardwood battens, Duraslat™ battens or powder-coated steel panels in plain or perforated cut-out designs.

Hardwood is treated with a UV-resistant oil finish in a light or dark tone.

All 4 sides are clad in 1 material option.

Compression lock prevents door rattling.
