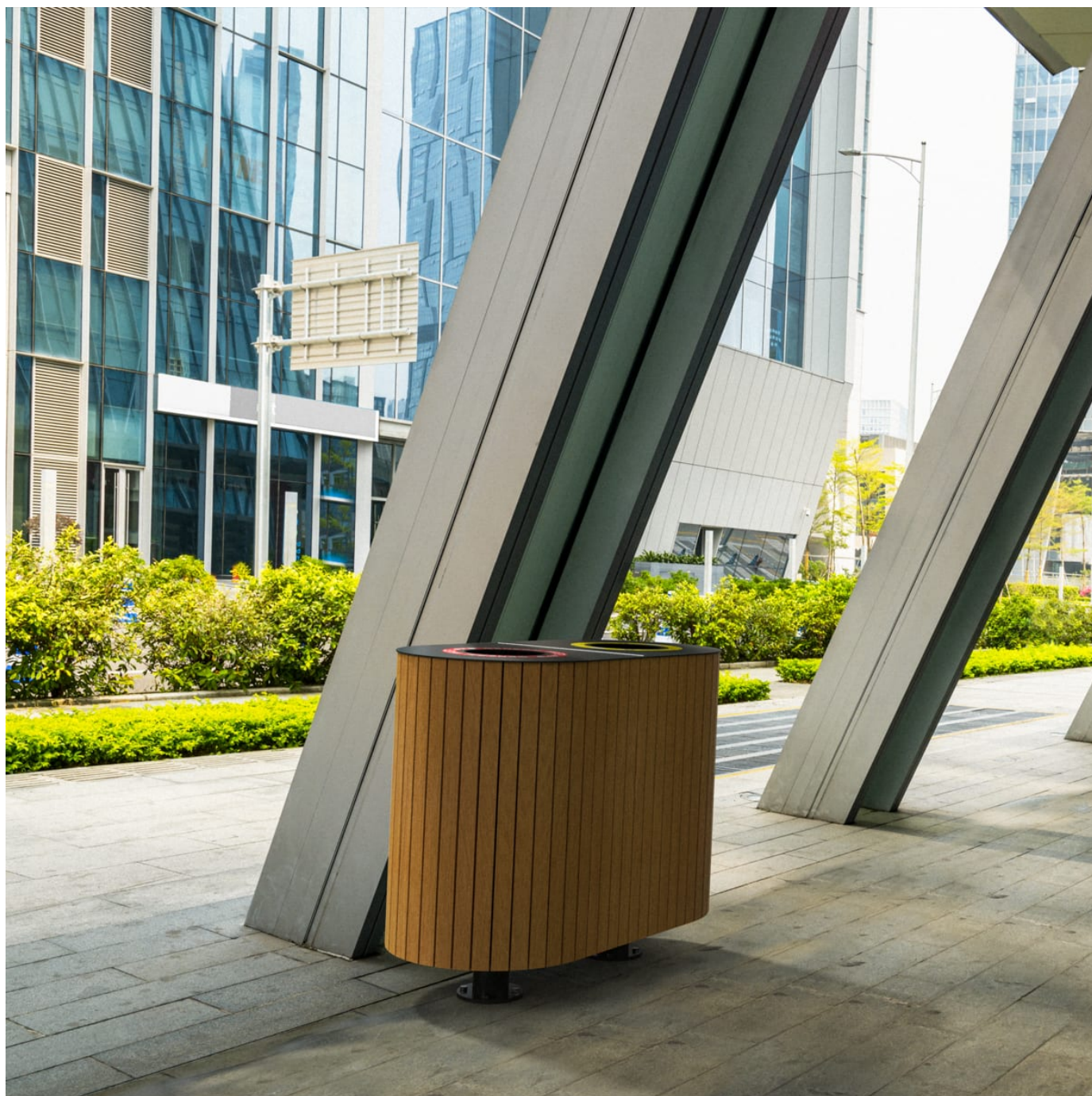


B+G MANLY CAPSULE DOUBLE POST LITTER BIN



Collections: **Manly**

B+G MANLY CAPSULE DOUBLE POST LITTER BIN



B+G MANLY CAPSULE DOUBLE POST LITTER BIN

Modern, round capsule double post litter bin for undercover. 360° panel design in 2 hardwood colors or cut-out designs in 17 powder-coat finishes.

Description

The contemporary, cylindrical design of the Manly capsule double post litter bin creates a minimalist aesthetic that complements the curves of modern public spaces, indoors or out. Finishes include Australian Eucalyptus hardwood battens in 2 finishes, powder-coated steel using cut-out designs or plain in 17 colors. Manly is a versatile, eye-catching addition to public spaces that need to stand the test of time.

Sustainability

Certified Hardwood
Australian Eucalyptus hardwood is sourced from sustainable forests certified by the Program for the Endorsement of Forest Certification (PEFC), the world’s largest forestry certification system.

Recycled Materials
We locally source our steel. It means we know it uses recycled content and is 100% recyclable.

Low Pollutants
Our powder-coating process doesn’t emit Volatile Organic Compounds (VOCs) and has Environmental Product Declarations (EPDs) that enable projects to qualify for LEED credits.

Powder Coat

Core
Coreten (textured), Charcoal (satin), Silver Pearl (satin metallic), Black (satin), White (satin), Bronze (satin metallic)

Signature
Deep Ocean (satin), Wedgewood (satin), Mangrove (satin), Territory Red (matt), Claypot (satin), Paperbark (satin)

Bold
Sky Blue (satin), Yellow Green (satin), Pure Orange (satin), Carmine Red (satin), Zinc Yellow (satin)

Dimensions

Hardwood
51"W x 26"D x 32"H
(1295mmW x 650mmD x 820mmH)

Plain Panel
51"W x 26"D x 30"H
(1295mmW x 650mmD x 755mmH)

Perforated Panel
51"W x 26"D x 31"H
(1295mmW x 650mmD x 800mmH)

Capacity 20 gal (80L)

B+G MANLY CAPSULE DOUBLE POST LITTER BIN

Batten Type	Hardwood: Australian Eucalyptus
Frame	Powder-coated steel
Weight	Hardwood 282lbs (128kg) Plain Panel 214lbs (97kg) Perforated Panel 207lbs (94kg)
Signage	Vinyl decal signage for the flat lid on request.
Made In	USA
Lead Time	6-8 weeks
Assembly & Delivery	Shipped fully assembled on pallets.
Fixing Detail	Post fixed by others - surface fixed. Anchors not included

B+G MANLY CAPSULE DOUBLE POST LITTER BIN

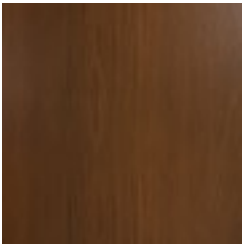
Care Instructions	<p><u>Hardwood</u></p> <p>Cleaning</p> <p>Remove any loose surface deposits with a soft bristled brush and wipe down with fresh water and a non-abrasive cloth.</p> <p>Oiling</p> <p>Oiling of timber will postpone natural greying, repel moisture, improve mould resistance, help maintain a smooth surface texture and enhance the grain and colour.</p> <p>To maintain, lightly sand rough areas of timber and brush on one coat of timber decking oil every 6 months or as required.</p> <p><u>Powder-Coat</u></p> <p>Cleaning</p> <p>Carefully remove any loose surface deposits with a wet sponge or soft bristled brush.</p> <p>Use a soft (non-abrasive) cloth or brush and a diluted solution of mild detergent and warm water.</p> <p>Ensure surfaces are thoroughly rinsed with clean fresh water after cleaning to remove all residues.</p> <p>Never use thinners, abrasive cleaning agents, alcohol-based, acid or alkali cleaning agents.</p>
Warranty	5-year warranty. View the warranty for more details.
Additional Comments	<p>Panel designs available in hardwood battens or powder-coated steel in plain or perforated cut-out designs.</p> <p>Hardwood is treated with a UV-resistant oil finish in a light or dark tone.</p> <p>Compression lock prevents door rattling.</p>
How to Specify	<p>Select your size - double</p> <p>Select your capacity - 20 gal (80L)</p> <p>Select your lid and post color</p> <p>Select your panel design and finish</p> <p>Select your signage type</p> <p>Select your fixing type</p>

B+G MANLY CAPSULE DOUBLE POST LITTER BIN

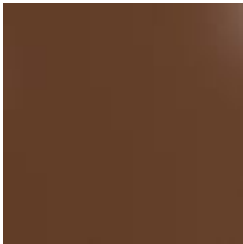
Colour & Finish Options



Hardwood Australian
Eucalyptus Light Oil



Hardwood Australian
Eucalyptus Dark Oil



Core Powder-coat
Coreten Textured



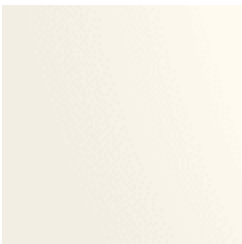
Core Powder-coat
Charcoal Satin



Core Powder-coat
Silver Pearl Satin
Metallic



Core Powder-coat
Black Satin



Core Powder-coat
White Satin



Core Powder-coat
Bronze Satin Metallic



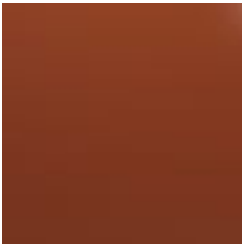
Signature Powder-
Coat Deep Ocean
Satin



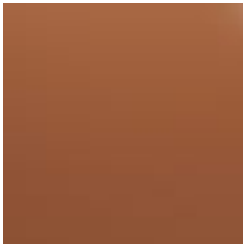
Signature Powder-
Coat Wedgewood
Satin



Signature Powder-
Coat Mangrove Satin



Signature Powder-
Coat Territory Red
Matt



Signature Powder-
Coat Claypot Satin



Signature Powder-
Coat Paperbark Satin



Bold Powder-coat
Sky Blue Satin



Bold Powder-coat
Yellow Green Satin



Bold Powder-coat
Pure Orange Satin



Bold Powder-coat
Carmine Red Satin



Bold Powder-coat
Zinc Yellow Satin