

B+G TERRAIN SEAT

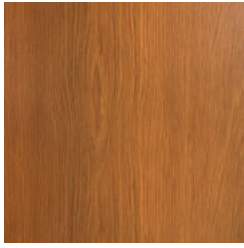
Seating » Seats



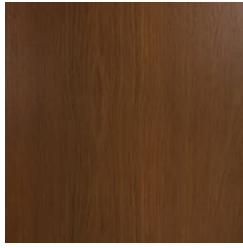
Collection: **Terrain**

B+G TERRAIN SEAT

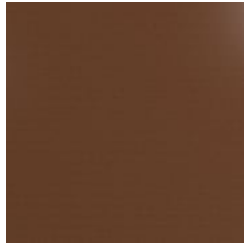
Seating » Seats



Hardwood Australian Eucalyptus Light Oil



Hardwood Australian Eucalyptus Dark Oil



Core Powder-Coat Coreten Textured



Core Powder-Coat Charcoal Satin



Core Powder-Coat Silver Pearl Satin Metallic



Core Powder-Coat Black Satin



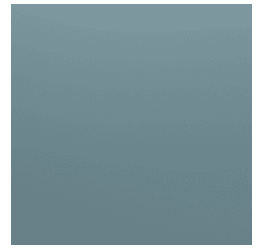
Core Powder-Coat White Satin



Core Powder-Coat Bronze Satin Metallic



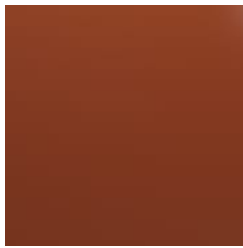
Signature Powder-Coat Deep Ocean Satin



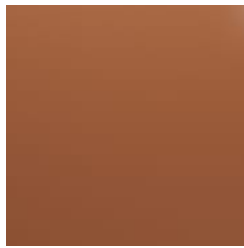
Signature Powder-Coat Wedgewood Satin



Signature Powder-Coat Mangrove Satin



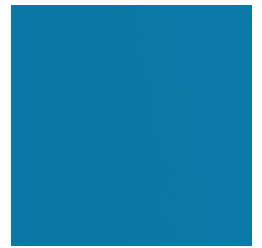
Signature Powder-Coat Territory Red Matt



Signature Powder-Coat Claypot Satin



Signature Powder-Coat Paperbark Satin



Bold Powder-Coat Sky Blue Satin



Bold Powder-Coat Yellow Green Satin



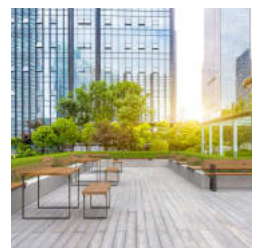
Bold Powder-Coat Pure Orange Satin



Bold Powder-Coat Carmine Red Satin



Bold Powder-Coat Zinc Yellow Satin



B+G TERRAIN SEAT

Seating » Seats



B+G TERRAIN SEAT

Seating » Seats

Contemporary, robust seat design. Solid, trapezoidal, hardwood battens in 2 colors with a sleek steel frame in 17 zinc-primed powder-coat finishes.

Description	The juxtaposition of solid, hardwood battens and a sleek steel frame is unified with trapezoidal design elements that add strength and visual appeal to the Terrain seat. Finishes include 2 Australian Eucalyptus hardwood and 17 zinc-primed powder-coat colors. Terrain is a high-quality collection that adds a robust, contemporary feel to public spaces.
Made In	USA
Dimensions	83"W x 24"D x 31"H (2100mmW x 615mmD x 785mmH) Seat height: 17" (440mm)
Weight	213.4lbs (97kg)
Batten Type	Hardwood: Australian Eucalyptus
Frame	Powder-coated, zinc-primed steel
Powder Coat	Core Coreten (textured), Charcoal (satin), Silver Pearl (satin metallic), Black (satin), White (satin), Bronze (satin metallic) Signature Deep Ocean (satin), Wedgewood (satin), Mangrove (satin), Territory Red (matt), Claypot (satin), Paperbark (satin) Bold Sky Blue (satin), Yellow Green (satin), Pure Orange (satin), Carmine Red (satin), Zinc Yellow (satin)

B+G TERRAIN SEAT

Seating » Seats

Sustainability

Certified Hardwood

Australian Eucalyptus hardwood is sourced from sustainable forests certified by the Program for the Endorsement of Forest Certification (PEFC), the world's largest forestry certification system.

Recycled Materials

We locally source our steel. It means we know it uses recycled content and is 100% recyclable.

Low Pollutants

Our powder-coating process doesn't emit Volatile Organic Compounds (VOCs) and has Environmental Product Declarations (EPDs) that enable projects to qualify for LEED credits.

Warranty

5-year warranty. View the [warranty](#) for more details.

Lead Time

6-8 weeks

Assembly & Delivery

Shipped fully assembled on pallets.

Fixing Detail

Freestanding or surface fixed by others.
Anchors not included.

How to Specify

Select your batten finish
Select your frame finish

B+G TERRAIN SEAT

Seating » Seats

Care Instructions

Hardwood

Cleaning

Remove any loose surface deposits with a soft bristled brush and wipe down with fresh water and a non-abrasive cloth.

Oiling

Oiling of timber will postpone natural greying, repel moisture, improve mould resistance, help maintain a smooth surface texture and enhance the grain and colour.

To maintain, lightly sand rough areas of timber and brush on one coat of timber decking oil every 6 months or as required.

Powder-Coat

Cleaning

Carefully remove any loose surface deposits with a wet sponge or soft bristled brush.

Use a soft (non-abrasive) cloth or brush and a diluted solution of mild detergent and warm water.

Ensure surfaces are thoroughly rinsed with clean fresh water after cleaning to remove all residues.

Never use thinners, abrasive cleaning agents, alcohol-based, acid or alkali cleaning agents.

Additional Comments

Hardwood is treated with a UV-resistant oil finish in a light or dark tone. Battens feature a trapezoidal profile.
