

# B+G URBAN CURVED BENCH

Seating » Benches



Collections: **Urban**

# B+G URBAN CURVED BENCH

Seating » Benches

---



# B+G URBAN CURVED BENCH

Seating » Benches

---



# B+G URBAN CURVED BENCH

Seating » Benches

---



# B+G URBAN CURVED BENCH

Seating » Benches

---



# B+G URBAN CURVED BENCH

Seating » Benches

---





# B+G URBAN CURVED BENCH

Seating » Benches

Timeless curved bench design. Batten top in 2 hardwood or 4 Duraslat™ colors supported by an elegant cast aluminum frame in 17 powder-coat finishes.

**Description**

Referencing Paris's famous wrought ironwork, curved cast aluminum framing is complemented by muscular hardwood or Duraslat™ surfaces to offer a timeless Urban curved seat. The modularity allows for snaking curve, full ring or shallow bend configurations to be created to break up linear spaces. It is ideal for seating around trees, along curved garden beds and walls. Finishes include 2 Australian Eucalyptus hardwood or 4 Duraslat™ colors and 17 powder-coat finishes or a natural aluminum finish. Urban is close to our heart; a classic, elegant, and highly functional collection that works in almost any public space.

**Sustainability**

**Certified Hardwood**  
Australian Eucalyptus hardwood is sourced from sustainable forests certified by the Program for the Endorsement of Forest Certification (PEFC), the world's largest forestry certification system.

**Material Alternatives**  
We offer sustainable alternatives to hardwood, such as Duraslat™; a mineral-based composite material that contains no Volatile Organic Compounds (VOCs) and is engineered using up to 46% natural filler that is based on a renewable mineral.

**Recycled Materials**  
We locally source our steel. It means we know it uses recycled content and is 100% recyclable.

**Low Pollutants**  
Our powder-coating process doesn't emit VOCs and has Environmental Product Declarations (EPDs) that enable projects to qualify for LEED credits.

**Powder Coat**

**Core**  
Coreten (textured), Charcoal (satin), Silver Pearl (satin metallic), Black (satin), White (satin), Bronze (satin metallic)

**Signature**  
Deep Ocean (satin), Wedgewood (satin), Mangrove (satin), Territory Red (matt), Claypot (satin), Paperbark (satin)

**Bold**  
Sky Blue (satin), Yellow Green (satin), Pure Orange (satin), Carmine Red (satin), Zinc Yellow (satin)

# B+G URBAN CURVED BENCH

Seating » Benches

Dimensions	79" arc x 17"H (2000mm arc x 435mmH)  Standard arc length: 79" (2000mm) Standard radius: 79" (2000mm) Seat depth: 17" (420mm) Seat height: 17" (440mm)
Batten Type	Hardwood Australian Eucalyptus  Duraslat™ Plateau, Summit, Canyon, Outback
Frame	Cast aluminum in a powder-coat or natural aluminum finish
Weight	Hardwood 88lbs (40kg)  Duraslat™ 76lbs (34kg)
Made In	USA
Lead Time	6-8 weeks
Assembly & Delivery	Shipped fully assembled on pallets.
Fixing Detail	Post fixed by others - surface fixed. Anchors not included.



# B+G URBAN CURVED BENCH

Seating » Benches

---

## Care Instructions

### Hardwood

#### Cleaning

Remove any loose surface deposits with a soft bristled brush and wipe down with fresh water and a non-abrasive cloth.

#### Oiling

Oiling of timber will postpone natural greying, repel moisture, improve mould resistance, help maintain a smooth surface texture and enhance the grain and colour.

To maintain, lightly sand rough areas of timber and brush on one coat of timber decking oil every 6 months or as required.

### Duraslat™

#### Cleaning

Clean with mild soap and water and use a soft brush to remove any dirt build-up.

### Powder-Coat

#### Cleaning

Carefully remove any loose surface deposits with a wet sponge or soft bristled brush.

Use a soft (non-abrasive) cloth or brush and a diluted solution of mild detergent and warm water.

Ensure surfaces are thoroughly rinsed with clean fresh water after cleaning to remove all residues.

Never use thinners, abrasive cleaning agents, alcohol-based, acid or alkali cleaning agents.

---

## Warranty

5-year warranty. View the [warranty](#) for more details.

---

## Additional Comments

Hardwood is treated with a UV-resistant oil finish in a light or dark tone.

---

## How to Specify

Select your arc length  
Specify your radius  
Select your batten finish  
Select your frame finish  
Select your fixing type

---

# B+G URBAN CURVED BENCH

Seating » Benches

## Colour & Finish Options



Hardwood Australian  
Eucalyptus Light Oil



Hardwood Australian  
Eucalyptus Dark Oil



Duraslat™ Plateau



Duraslat™ Summit



Duraslat™ Canyon



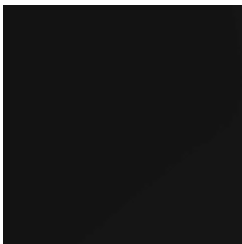
Duraslat™ Outback



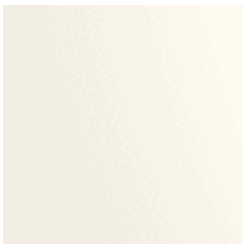
Core Powder-coat  
Charcoal Satin



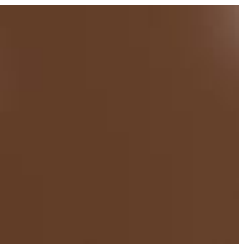
Core Powder-coat  
Silver Pearl Satin  
Metallic



Core Powder-coat  
Black Satin



Core Powder-coat  
White Satin



Core Powder-coat  
Coreten Textured



Core Powder-coat  
Bronze Satin Metallic



Signature Powder-  
Coat Deep Ocean  
Satin



Signature Powder-  
Coat Wedgewood  
Satin



Signature Powder-  
Coat Mangrove Satin



Signature Powder-  
Coat Territory Red  
Matt



Signature Powder-  
Coat Claypot Satin



Signature Powder-  
Coat Paperbark Satin



Bold Powder-coat  
Sky Blue Satin



Bold Powder-coat  
Yellow Green Satin



# B+G URBAN CURVED BENCH

Seating » Benches

---

Bold Powder-coat  
Pure Orange Satin

Bold Powder-coat  
Carmine Red Satin

Bold Powder-coat  
Zinc Yellow Satin