

B+G URBAN POST TABLE

Tables » Dining Height Tables



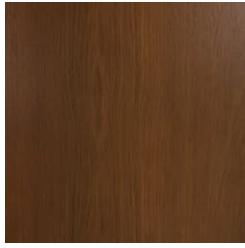
Collection: **Urban**

B+G URBAN POST TABLE

Tables » Dining Height Tables



Hardwood Australian
Eucalyptus Light Oil



Hardwood Australian
Eucalyptus Dark Oil



Duraslat™ Plateau



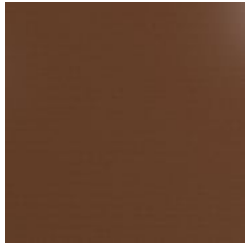
Duraslat™ Summit



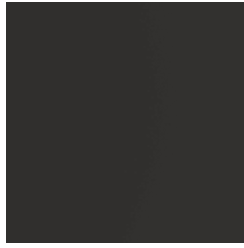
Duraslat™ Canyon



Duraslat™ Outback



Core Powder-Coat
Coreten Textured



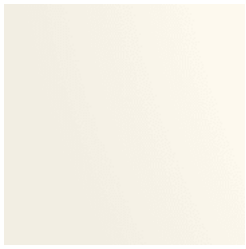
Core Powder-Coat
Charcoal Satin



Core Powder-Coat
Silver Pearl Satin
Metallic



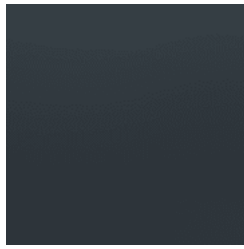
Core Powder-Coat
Black Satin



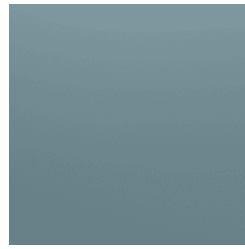
Core Powder-Coat
White Satin



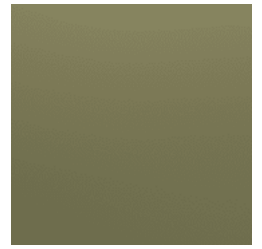
Core Powder-Coat
Bronze Satin Metallic



Signature Powder-
Coat Deep Ocean
Satin



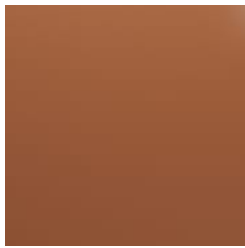
Signature Powder-
Coat Wedgewood
Satin



Signature Powder-
Coat Mangrove Satin



Signature Powder-
Coat Territory Red
Matt



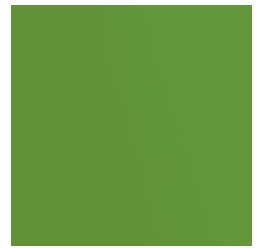
Signature Powder-
Coat Claypot Satin



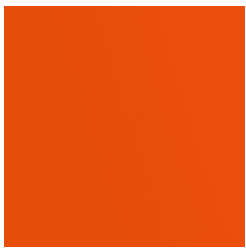
Signature Powder-
Coat Paperbark Satin



Bold Powder-Coat
Sky Blue Satin



Bold Powder-Coat
Yellow Green Satin



Bold Powder-Coat
Pure Orange Satin



Bold Powder-Coat
Carmine Red Satin



Bold Powder-Coat
Zinc Yellow Satin



B+G URBAN POST TABLE

Tables » Dining Height Tables



B+G URBAN POST TABLE

Tables » Dining Height Tables

Timeless post table design. Batten top in 2 hardwood or 4 Duraslat™ colors supported by an elegant cast aluminum frame in 17 powder-coat finishes.

Description Referencing Paris's famous wrought ironwork, curved cast aluminum framing is complemented by muscular hardwood or Duraslat™ surfaces to offer a timeless Urban post table. Finishes include 2 Australian Eucalyptus hardwood or 4 Duraslat™ colors and 17 powder-coat finishes or a natural aluminum finish. Urban is close to our heart; a classic, elegant, and highly functional collection that works in almost any public space.

Sustainability

Certified Hardwood
Australian Eucalyptus hardwood is sourced from sustainable forests certified by the Program for the Endorsement of Forest Certification (PEFC), the world's largest forestry certification system.

Material Alternatives
We offer sustainable alternatives to hardwood, such as Duraslat™; a mineral-based composite material that contains no Volatile Organic Compounds (VOCs) and is engineered using up to 46% natural filler that is based on a renewable mineral.

Recycled Materials
We locally source our steel. It means we know it uses recycled content and is 100% recyclable.

Low Pollutants
Our powder-coating process doesn't emit VOCs and has Environmental Product Declarations (EPDs) that enable projects to qualify for LEED credits.

Powder Coat

Core
Coreten (textured), Charcoal (satin), Silver Pearl (satin metallic), Black (satin), White (satin), Bronze (satin metallic)

Signature
Deep Ocean (satin), Wedgewood (satin), Mangrove (satin), Territory Red (matt), Claypot (satin), Paperbark (satin)

Bold
Sky Blue (satin), Yellow Green (satin), Pure Orange (satin), Carmine Red (satin), Zinc Yellow (satin)

B+G URBAN POST TABLE

Tables » Dining Height Tables

Dimensions

Hardwood
71"W x 29"D x 29"H
(1800mmW x 745mmD x 730mmH)

Duraslat™
71"W x 29"D x 29"H
(1800mmW x 725mmD x 725mmH)

Hardwood
83"W x 29"D x 29"H
(2100mmW x 745mmD x 730mmH)

Duraslat™
83"W x 29"D x 29"H
(2100mmW x 725mmD x 725mmH)

Batten Type

Hardwood
Australian Eucalyptus

Duraslat™
Plateau, Summit, Canyon, Outback

Frame

Cast aluminum in a powder-coat or natural aluminum finish

Post: powder-coated galvanized steel, colour to match frame specification or silver to coordinate with the natural aluminum finish

Weight

Hardwood
71"W
136lbs (62kg)
83"W
152lbs (69kg)

Duraslat™
71"W
132lbs (60kg)
83"W
145lbs (66kg)

Made In

USA

Lead Time

6-8 weeks

Assembly & Delivery

Shipped fully assembled on pallets.

Fixing Detail

Must be surface fixed. Anchors not included.

B+G URBAN POST TABLE

Tables » Dining Height Tables

Care Instructions

Hardwood

Cleaning

Remove any loose surface deposits with a soft bristled brush and wipe down with fresh water and a non-abrasive cloth.

Oiling

Oiling of timber will postpone natural greying, repel moisture, improve mould resistance, help maintain a smooth surface texture and enhance the grain and colour.

To maintain, lightly sand rough areas of timber and brush on one coat of timber decking oil every 6 months or as required.

Duraslat™

Cleaning

Clean with mild soap and water and use a soft brush to remove any dirt build-up.

Powder-Coat

Cleaning

Carefully remove any loose surface deposits with a wet sponge or soft bristled brush.

Use a soft (non-abrasive) cloth or brush and a diluted solution of mild detergent and warm water.

Ensure surfaces are thoroughly rinsed with clean fresh water after cleaning to remove all residues.

Never use thinners, abrasive cleaning agents, alcohol-based, acid or alkali cleaning agents.

Warranty

5-year warranty. View the [warranty](#) for more details.

Additional Comments

Hardwood is treated with a UV-resistant oil finish in a light or dark tone.

How to Specify

Select your length
Select your batten finish
Select your frame finish
Select your fixing type
