

# B+G URBAN TRI TABLE

Tables » Dining Height Tables



Collections: **Urban**

# B+G URBAN TRI TABLE

Tables » Dining Height Tables



# B+G URBAN TRI TABLE

Tables » Dining Height Tables

---

Unique tri table. Irregular hexagon shape. Batten top in 2 hardwood or 4 Duraslat™ colors. Elegant cast aluminum frame in 17 powder-coat finishes.

---

## Description

Referencing Paris's famous wrought ironwork, curved cast aluminum framing is complemented by muscular hardwood or Duraslat™ surfaces to offer a timeless and unique Urban tri table. Featuring a unique irregular hexagon shape and striking slatted top design, the table creates a focal gathering point and is ideal for large groups. Finishes include 2 Australian Eucalyptus hardwood or 4 Duraslat™ colors and 17 powder-coat finishes or a natural aluminum finish. Urban is close to our heart; a classic, elegant, and highly functional collection that works in almost any public space.

---

## Sustainability

### Certified Hardwood

Australian Eucalyptus hardwood is sourced from sustainable forests certified by the Program for the Endorsement of Forest Certification (PEFC), the world's largest forestry certification system.

### Material Alternatives

We offer sustainable alternatives to hardwood, such as Duraslat™; a mineral-based composite material that contains no Volatile Organic Compounds (VOCs) and is engineered using up to 46% natural filler that is based on a renewable mineral.

### Recycled Materials

We locally source our steel. It means we know it uses recycled content and is 100% recyclable.

### Low Pollutants

Our powder-coating process doesn't emit VOCs and has Environmental Product Declarations (EPDs) that enable projects to qualify for LEED credits.

---

## Powder Coat

### Core

Coreten (textured), Charcoal (satin), Silver Pearl (satin metallic), Black (satin), White (satin), Bronze (satin metallic)

### Signature

Deep Ocean (satin), Wedgewood (satin), Mangrove (satin), Territory Red (matt), Claypot (satin), Paperbark (satin)

### Bold

Sky Blue (satin), Yellow Green (satin), Pure Orange (satin), Carmine Red (satin), Zinc Yellow (satin)

---

# B+G URBAN TRI TABLE

Tables » Dining Height Tables

---

Dimensions	Hardwood 84"W x 73"D x 30"H (2125mmW x 1840mmD x 755mmH)  Duraslat™ 83"W x 72"D x 30"H (2105mmW x 1825mmD x 755mmH)
Batten Type	Hardwood Australian Eucalyptus  Duraslat™ Plateau, Summit, Canyon, Outback
Frame	Cast aluminum in a powder-coat or natural aluminum finish  Post: powder-coated galvanized steel, colour to match frame specification or silver to coordinate with the natural aluminum finish
Weight	Hardwood 326lbs (148kg)  Duraslat™ 320lbs (145kg)
Made In	USA
Lead Time	6-8 weeks
Assembly & Delivery	Flat pack assembly. Assembled on-site. Some simple assembly is required to attach the legs prior to installation. Due to the weight of this item the top will be delivered on a pallet with the legs separate. A forklift or lifting equipment (by others) is required to take delivery.
Fixing Detail	Post fixed by others - must be surface fixed. Anchors not included.

---

# B+G URBAN TRI TABLE

Tables » Dining Height Tables

---

## Care Instructions

### Hardwood

#### Cleaning

Remove any loose surface deposits with a soft bristled brush and wipe down with fresh water and a non-abrasive cloth.

#### Oiling

Oiling of timber will postpone natural greying, repel moisture, improve mould resistance, help maintain a smooth surface texture and enhance the grain and colour.

To maintain, lightly sand rough areas of timber and brush on one coat of timber decking oil every 6 months or as required.

### Duraslat™

#### Cleaning

Clean with mild soap and water and use a soft brush to remove any dirt build-up.

### Powder-Coat

#### Cleaning

Carefully remove any loose surface deposits with a wet sponge or soft bristled brush.

Use a soft (non-abrasive) cloth or brush and a diluted solution of mild detergent and warm water.

Ensure surfaces are thoroughly rinsed with clean fresh water after cleaning to remove all residues.

Never use thinners, abrasive cleaning agents, alcohol-based, acid or alkali cleaning agents.

---

## Warranty

5-year warranty. View the [warranty](#) for more details.

---

## Additional Comments

Hardwood is treated with a UV-resistant oil finish in a light or dark tone.

---

## How to Specify

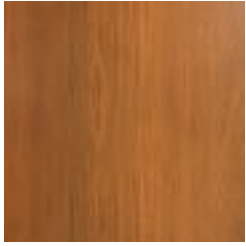
Select your batten finish  
Select your frame finish  
Select your fixing type

---

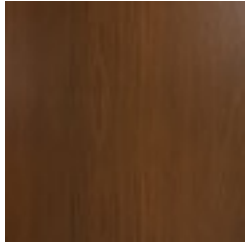
# B+G URBAN TRI TABLE

Tables » Dining Height Tables

## Colour & Finish Options



Hardwood Australian  
Eucalyptus Light Oil



Hardwood Australian  
Eucalyptus Dark Oil



Duraslat™ Plateau



Duraslat™ Summit



Duraslat™ Canyon



Duraslat™ Outback



Core Powder-Coat  
Coreten Textured



Core Powder-Coat  
Charcoal Satin



Core Powder-Coat  
Silver Pearl Satin  
Metallic



Core Powder-Coat  
Black Satin



Core Powder-Coat  
White Satin



Core Powder-Coat  
Bronze Satin Metallic



Signature Powder-  
Coat Deep Ocean  
Satin



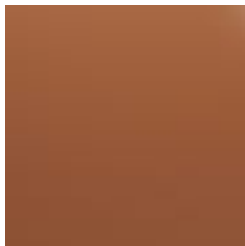
Signature Powder-  
Coat Wedgewood  
Satin



Signature Powder-  
Coat Mangrove Satin



Signature Powder-  
Coat Territory Red  
Matt



Signature Powder-  
Coat Claypot Satin



Signature Powder-  
Coat Paperbark Satin



Bold Powder-Coat  
Sky Blue Satin



Bold Powder-Coat  
Yellow Green Satin



# B+G URBAN TRI TABLE

Tables » Dining Height Tables

---

Bold Powder-Coat  
Pure Orange Satin

Bold Powder-Coat  
Carmine Red Satin

Bold Powder-Coat  
Zinc Yellow Satin