

B+G VERGE CURVED BENCH

Seating » Benches



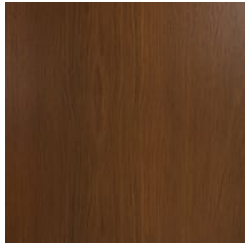
Collection: **Verge**

B+G VERGE CURVED BENCH

Seating » Benches



Hardwood Australian Eucalyptus Light Oil



Hardwood Australian Eucalyptus Dark Oil



Duraslat™ Plateau



Duraslat™ Summit



Duraslat™ Canyon



Duraslat™ Outback



Core Powder-Coat Coreten Textured



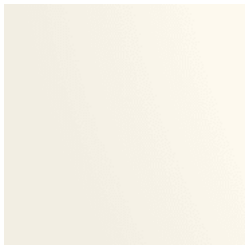
Core Powder-Coat Charcoal Satin



Core Powder-Coat Silver Pearl Satin Metallic



Core Powder-Coat Black Satin



Core Powder-Coat White Satin



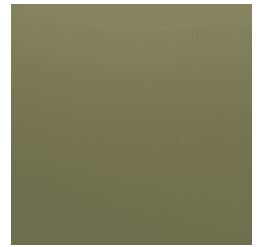
Core Powder-Coat Bronze Satin Metallic



Signature Powder-Coat Deep Ocean Satin



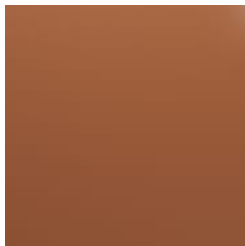
Signature Powder-Coat Wedgewood Satin



Signature Powder-Coat Mangrove Satin



Signature Powder-Coat Territory Red Matt



Signature Powder-Coat Claypot Satin



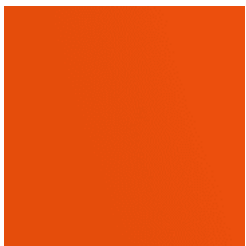
Signature Powder-Coat Paperbark Satin



Bold Powder-Coat Sky Blue Satin



Bold Powder-Coat Yellow Green Satin



Bold Powder-Coat Pure Orange Satin



Bold Powder-Coat Carmine Red Satin



Bold Powder-Coat Zinc Yellow Satin



B+G VERGE CURVED BENCH

Seating » Benches



B+G VERGE CURVED BENCH

Seating » Benches

Simple, durable curved bench. Batten top in 2 hardwood or 4 Duraslat colors with steel posts and base plates in 17 powder-coat or galvanized finishes.

Description

The Verge curved bench is simple, modular, highly durable design. Hardwood or Duraslat™ battens work with cylindrical steel posts and circular base plates to add a functional and utilitarian feel to spaces you know are going to get their fair share of wear and tear. The modularity allows for snaking curve, full ring or shallow bend configurations to be created to break up linear spaces. It is ideal for seating around trees, along curved garden beds and walls. Finishes include 2 Australian Eucalyptus hardwood or 4 Duraslat™ colors and 17 powder-coat finishes or a galvanized finish.

Sustainability

Certified Hardwood

Australian Eucalyptus hardwood is sourced from sustainable forests certified by the Program for the Endorsement of Forest Certification (PEFC), the world's largest forestry certification system.

Material Alternatives

We offer sustainable alternatives to hardwood, such as Duraslat™; a mineral-based composite material that contains no Volatile Organic Compounds (VOCs) and is engineered using up to 46% natural filler that is based on a renewable mineral.

Recycled Materials

We locally source our steel. It means we know it uses recycled content and is 100% recyclable.

Low Pollutants

Our powder-coating process doesn't emit VOCs and has Environmental Product Declarations (EPDs) that enable projects to qualify for LEED credits.

Powder Coat

Core

Coreten (textured), Charcoal (satin), Silver Pearl (satin metallic), Black (satin), White (satin), Bronze (satin metallic)

Signature

Deep Ocean (satin), Wedgewood (satin), Mangrove (satin), Territory Red (matt), Claypot (satin), Paperbark (satin)

Bold

Sky Blue (satin), Yellow Green (satin), Pure Orange (satin), Carmine Red (satin), Zinc Yellow (satin)

B+G VERGE CURVED BENCH

Seating » Benches

Dimensions 79" arc x 18"H
(2000mm arc x 450mmH)

Standard arc length: 79" (2000mm)
Standard radius: 79" (2000mm)
Seat depth: 17" (440mm)
Seat height: 18" (450mm)

Batten Type Hardwood
Australian Eucalyptus

Duraslat™
Plateau, Summit, Canyon, Outback

Frame Powder-coated steel or hot-dip galvanized steel

Weight Hardwood
74.8lbs (34kg)

Duraslat™
79.2lbs (36kg)

Made In USA

Lead Time 6-8 weeks

Assembly & Delivery Shipped fully assembled on pallets.

Fixing Detail Post fixed by others - surface fixed.
Anchors not included.

B+G VERGE CURVED BENCH

Seating » Benches

Care Instructions

Hardwood

Cleaning

Remove any loose surface deposits with a soft bristled brush and wipe down with fresh water and a non-abrasive cloth.

Oiling

Oiling of timber will postpone natural greying, repel moisture, improve mould resistance, help maintain a smooth surface texture and enhance the grain and colour.

To maintain, lightly sand rough areas of timber and brush on one coat of timber decking oil every 6 months or as required.

Duraslat™

Cleaning

Clean with mild soap and water and use a soft brush to remove any dirt build-up.

Powder-Coat

Cleaning

Carefully remove any loose surface deposits with a wet sponge or soft bristled brush.

Use a soft (non-abrasive) cloth or brush and a diluted solution of mild detergent and warm water.

Ensure surfaces are thoroughly rinsed with clean fresh water after cleaning to remove all residues.

Never use thinners, abrasive cleaning agents, alcohol-based, acid or alkali cleaning agents.

Warranty

5-year warranty. View the [warranty](#) for more details.

Additional Comments

Hardwood is treated with a UV-resistant oil finish in a light or dark tone.

How to Specify

Select your arc length
Specify your radius
Select your batten finish
Select your frame finish
Select your fixing type
