

# B+G ALFRESCO TABLE

Tables » Dining Height Tables



Collection: **Alfresco**

# B+G ALFRESCO TABLE

Tables » Dining Height Tables



Hardwood Australian  
Eucalyptus Light Oil



Hardwood Australian  
Eucalyptus Dark Oil



Duraslat™ Plateau



Duraslat™ Summit



Duraslat™ Canyon



Duraslat™ Outback



Core Powder-Coat  
Coreten Textured



Core Powder-Coat  
Charcoal Satin



Core Powder-Coat  
Silver Pearl Satin  
Metallic



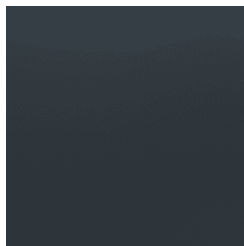
Core Powder-Coat  
Black Satin



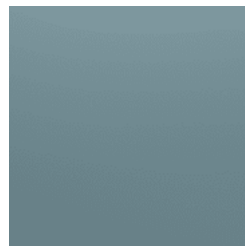
Core Powder-Coat  
White Satin



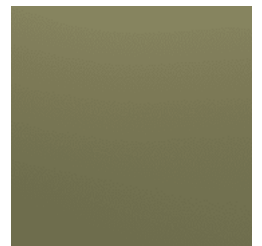
Core Powder-Coat  
Bronze Satin Metallic



Signature Powder-  
Coat Deep Ocean  
Satin



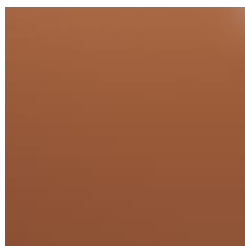
Signature Powder-  
Coat Wedgewood  
Satin



Signature Powder-  
Coat Mangrove Satin



Signature Powder-  
Coat Territory Red  
Matt



Signature Powder-  
Coat Claypot Satin



Signature Powder-  
Coat Paperbark Satin



Bold Powder-Coat  
Sky Blue Satin



Bold Powder-Coat  
Yellow Green Satin



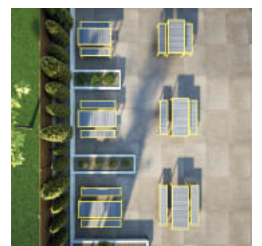
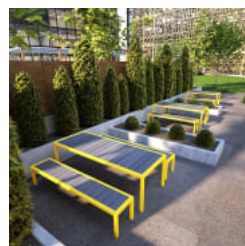
Bold Powder-Coat  
Pure Orange Satin



Bold Powder-Coat  
Carmine Red Satin



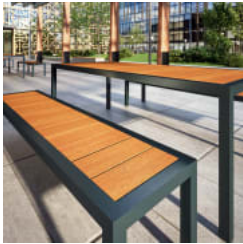
Bold Powder-Coat  
Zinc Yellow Satin





# B+G ALFRESCO TABLE

Tables » Dining Height Tables



# B+G ALFRESCO TABLE

Tables » Dining Height Tables

Contemporary dining height table. Light in scale. Battens in 2 hardwood or 4 Duraslat™ colors and slim-line steel frame in 17 powder-coat finishes.

**Description** Slim-line, powder-coated steel framing together with linear Australian Eucalyptus hardwood or Duraslat™ battens provide the Alfresco table with a contemporary aesthetic that is light in scale. As its name implies, Alfresco is suited to outdoor communal dining, ideal for educational or corporate campuses, bars, cafes, and restaurants.

**Made In** USA

**Dimensions** 74"W x 37"D x 30"H  
(1860mmW x 940mmD x 750mmH)  
85"W x 37"D x 330"H  
(2150mmW x 940mmD x 750mmH)  
96"W x 37"D x 30"H  
(2455mmW x 940mmD x 750mmH)

**Weight** Hardwood  
74"W  
144.98lbs (65.9kg)  
85"W  
165lbs (75kg)  
96"W  
184.8lbs (84kg)  
Duraslat™  
74"W  
112.86lbs (51.3kg)  
85"W  
127.38lbs (57.9kg)  
96"W  
141.9lbs (64.5kg)

**Batten Type** Hardwood  
Australian Eucalyptus  
Duraslat™  
Plateau, Summit, Canyon, Outback

**Frame** Powder-coated steel

# B+G ALFRESCO TABLE

Tables » Dining Height Tables

---

## Powder Coat

### Core

Coreten (textured), Charcoal (satin), Silver Pearl (satin metallic), Black (satin), White (satin), Bronze (satin metallic)

### Signature

Deep Ocean (satin), Wedgewood (satin), Mangrove (satin), Territory Red (matt), Claypot (satin), Paperbark (satin)

### Bold

Sky Blue (satin), Yellow Green (satin), Pure Orange (satin), Carmine Red (satin), Zinc Yellow (satin)

---

## Sustainability

### Certified Hardwood

Australian Eucalyptus hardwood is sourced from sustainable forests certified by the Program for the Endorsement of Forest Certification (PEFC), the world's largest forestry certification system.

### Material Alternatives

We offer sustainable alternatives to hardwood, such as Duraslat™; a mineral-based composite material that contains no Volatile Organic Compounds (VOCs) and is engineered using up to 46% natural filler that is based on a renewable mineral.

### Recycled Materials

We locally source our steel. It means we know it uses recycled content and is 100% recyclable.

### Low Pollutants

Our powder-coating process doesn't emit VOCs and has Environmental Product Declarations (EPDs) that enable projects to qualify for LEED credits.

---

## Warranty

5-year warranty. View the [warranty](#) for more details.

---

## Lead Time

6-8 weeks

---

## Assembly & Delivery

Shipped fully assembled on pallets.

---

## Fixing Detail

Freestanding. Optional floor fixing tabs.

---

## How to Specify

Select your length  
Select your batten finish  
Select your frame finish  
Select your fixing type

---

# B+G ALFRESCO TABLE

Tables » Dining Height Tables

---

## Care Instructions

### Hardwood

#### Cleaning

Remove any loose surface deposits with a soft bristled brush and wipe down with fresh water and a non-abrasive cloth.

#### Oiling

Oiling of timber will postpone natural greying, repel moisture, improve mould resistance, help maintain a smooth surface texture and enhance the grain and colour.

To maintain, lightly sand rough areas of timber and brush on one coat of timber decking oil every 6 months or as required.

### Duraslat™

#### Cleaning

Clean with mild soap and water and use a soft brush to remove any dirt build-up.

### Powder-Coat

#### Cleaning

Carefully remove any loose surface deposits with a wet sponge or soft bristled brush.

Use a soft (non-abrasive) cloth or brush and a diluted solution of mild detergent and warm water.

Ensure surfaces are thoroughly rinsed with clean fresh water after cleaning to remove all residues.

Never use thinners, abrasive cleaning agents, alcohol-based, acid or alkali cleaning agents.

---

## Additional Comments

Hardwood is treated with a UV-resistant oil finish in a light or dark tone.

---