

B+G CONNECT OBLONG DOUBLE BACKREST MEDIUM LOW SEAT



Collection: **Connect**

B+G CONNECT OBLONG DOUBLE BACKREST MEDIUM LOW SEAT



Hardwood Australian Eucalyptus Light Oil



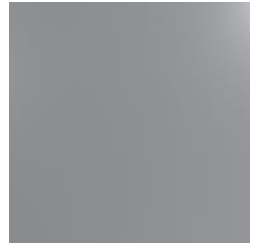
Hardwood Australian Eucalyptus Dark Oil



Core Powder-Coat Coreten Textured



Core Powder-Coat Charcoal Satin



Core Powder-Coat Silver Pearl Satin Metallic



Core Powder-Coat Black Satin



Core Powder-Coat White Satin



Core Powder-Coat Bronze Satin Metallic



Signature Powder-Coat Deep Ocean Satin



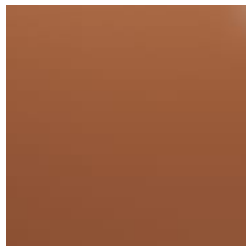
Signature Powder-Coat Wedgewood Satin



Signature Powder-Coat Mangrove Satin



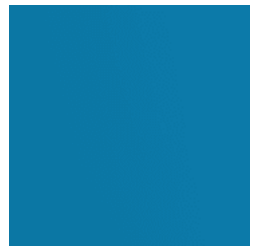
Signature Powder-Coat Territory Red Matt



Signature Powder-Coat Claypot Satin



Signature Powder-Coat Paperbark Satin



Bold Powder-Coat Sky Blue Satin



Bold Powder-Coat Yellow Green Satin



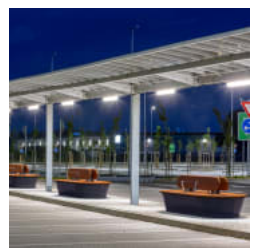
Bold Powder-Coat Pure Orange Satin



Bold Powder-Coat Carmine Red Satin



Bold Powder-Coat Zinc Yellow Satin



B+G CONNECT OBLONG DOUBLE BACKREST MEDIUM LOW SEAT



B+G CONNECT OBLONG DOUBLE BACKREST MEDIUM LOW SEAT

Modern, modular, oblong seat with a double backrest in a medium low size with hardwood battens and a steel frame in 17 powder-coat colors.

Description	Connect oblong double backrest medium low seat is versatile, durable, and sustainable, making it suitable for a wide range of outdoor or indoor spaces. This can be used as a stand-alone module or paired with the range of 18 seating modules, consisting of geometric shapes, and interlocking elements that can transform any public space into a social hub. Connect features certified Australian Eucalyptus hardwood battens with bullnose edging and a steel frame in 17 VOC-free powder-coat colours that can be customized to suit your project.
Made In	USA
Dimensions	85"W x 45"D x 32"H (2160mmW x 1155mmD x 805mmH)
Weight	444lbs (201.7kg)
Batten Type	Class 1 + Select Grade Hardwood: Australian Eucalyptus with bullnose edging
Frame	Powder-coated steel
Powder Coat	Core Coreten (textured), Charcoal (satin), Silver Pearl (satin metallic), Black (satin), White (satin), Bronze (satin metallic) Signature Deep Ocean (satin), Wedgewood (satin), Mangrove (satin), Territory Red (matt), Claypot (satin), Paperbark (satin) Bold Sky Blue (satin), Yellow Green (satin), Pure Orange (satin), Carmine Red (satin), Zinc Yellow (satin)

B+G CONNECT OBLONG DOUBLE BACKREST MEDIUM LOW SEAT

Sustainability

Certified Hardwood
Australian Eucalyptus hardwood is sourced from sustainable forests certified by the Program for the Endorsement of Forest Certification (PEFC), the world’s largest forestry certification system.

Recycled Materials
We locally source our steel. It means we know it uses recycled content and is 100% recyclable.

Low Pollutants
Our powder-coating process doesn’t emit VOCs and has Environmental Product Declarations (EPDs) that enable projects to qualify for LEED credits.

Warranty 5-year warranty. View the [warranty](#) for more details.

Lead Time 6-8 weeks

Assembly & Delivery Shipped fully assembled on pallets.

Fixing Detail Fixed by others. Fix direct to a concrete slab or through pavers and into a concrete slab.

Depending on the location, the seating modules can be placed without them being fixed to a slab.

How to Specify Select your batten finish
Select your frame finish

B+G CONNECT OBLONG DOUBLE BACKREST MEDIUM LOW SEAT

Care Instructions

Hardwood

Cleaning

Remove any loose surface deposits with a soft bristled brush and wipe down with fresh water and a non-abrasive cloth.

Oiling

Oiling of timber will postpone natural greying, repel moisture, improve mould resistance, help maintain a smooth surface texture and enhance the grain and colour.

To maintain, lightly sand rough areas of timber and brush on one coat of timber decking oil every 6 months or as required.

Powder-Coat

Cleaning

Carefully remove any loose surface deposits with a wet sponge or soft bristled brush.

Use a soft (non-abrasive) cloth or brush and a diluted solution of mild detergent and warm water.

Ensure surfaces are thoroughly rinsed with clean fresh water after cleaning to remove all residues.

Never use thinners, abrasive cleaning agents, alcohol-based, acid or alkali cleaning agents.

Additional Comments

Hardwood is treated with a UV-resistant oil finish in a light or dark tone.
