

B+G CONTOUR ALL IN ONE SETTING

Tables » Dining Height Tables



Collections: **Contour**

Designed By: **Botton + Gardiner**

Applications: **Indoor, Outdoor**

B+G CONTOUR ALL IN ONE SETTING

Tables » Dining Height Tables



B+G CONTOUR ALL IN ONE SETTING

Tables » Dining Height Tables



B+G CONTOUR ALL IN ONE SETTING

Tables » Dining Height Tables



B+G CONTOUR ALL IN ONE SETTING

Tables » Dining Height Tables

Contemporary 6-seater all-in-one table setting. Hardwood, Duraslat™ battens with a cast aluminium frame in powder-coat colours or satin finish.

Description

With unifying, considered design details, the Contour seat forms part of the contemporary Contour range of commercial outdoor furniture to suit diverse needs and environments. Featuring fluid forms that reference soft, rounded, naturally occurring shapes, the Contour seat complements the collection of seating and table settings that can be arranged in multiple ways to create engaging public spaces. With optional armrests for greater comfort and finishes that include hard-wearing Eucalyptus or Duraslat battens with a cast aluminium frame in 17 powder-coat colours or a satin finish, Contour is made to stand the test of time.

Sustainability

Certified Hardwood

All hardwood is sourced from sustainable forests certified by the Program for the Endorsement of Forest Certification (PEFC), the world's largest forestry certification system.

Recycled Materials

We locally source our aluminium and steel. It means we know it uses recycled content and is 100% recyclable.

Duraslat™ is made from 90% of recycled hardwood fibres and reclaimed plastic materials, which reduces demand for virgin materials.

Low Pollutants

Our powder-coating process doesn't emit Volatile Organic Compounds (VOCs) and has Environmental Product Declarations (EPDs)

Powder Coat

Core

Signature

Bold

B+G CONTOUR ALL IN ONE SETTING

Tables » Dining Height Tables

| | |
|--------------------------|--------------------------|
| Dimensions | WITHOUT BACKREST |
| | Hardwood |
| | 70.8"W x 67.1"D x 28.7"H |
| | Duraslat™ |
| | 70.8"W x 66.9"D x 28.3"H |
| | WITH BACKREST |
| Hardwood | |
| 70.8"W x 76.1"D x 32.6"H | |
| Duraslat™ XG | |
| 70.8"W x 76.1"D x 32.6"H | |
| Seat height HW: 17.7" | |
| Seat height DS: 17.3" | |

| | |
|-------------|-----------|
| Batten Type | Hardwood |
| | Duraslat™ |

| | |
|-------|---|
| Frame | Cast aluminium in powder-coat or satin finish |
|-------|---|

| | |
|---------|-----|
| Made In | USA |
|---------|-----|

| | |
|-----------|-----------|
| Lead Time | 6-8 weeks |
|-----------|-----------|

| | |
|---------------------|--------------------------------------|
| Assembly & Delivery | Shipped with some assembly required. |
|---------------------|--------------------------------------|

| | |
|---------------|---|
| Fixing Detail | Fixed or Freestanding. Surface fixed by others. Anchors not included.. |
|---------------|---|

B+G CONTOUR ALL IN ONE SETTING

Tables » Dining Height Tables

Care Instructions

Hardwood

Cleaning

Remove any loose surface deposits with a soft bristled brush and wipe down with fresh water and a non-abrasive cloth.

Oiling

Oiling of timber will postpone natural greying, repel moisture, improve mould resistance, help maintain a smooth surface texture and enhance the grain and colour.

To maintain, lightly sand rough areas of timber and brush on one coat of timber decking oil every 6 months or as required.

Duraslat™

Cleaning

Clean with mild soap and water and use a soft brush to remove any dirt build-up.

Powder-Coat

Cleaning

Carefully remove any loose surface deposits with a wet sponge or soft bristled brush.

Use a soft (non-abrasive) cloth or brush and a diluted solution of mild detergent and warm water.

Ensure surfaces are thoroughly rinsed with clean fresh water after cleaning to remove all residues.

Never use thinners, abrasive cleaning agents, alcohol-based, acid or alkali cleaning agents.

Warranty

5-year warranty. View the [warranty](#) for more details.

Customisable

As this item is made to order locally, custom lengths are available on request.

Additional Comments

Hardwood is treated with a UV-resistant oil finish.

Considered design details include concealed fixings and integrated anchor points for clean lines.

How to Specify

Select your batten finish
Select your frame finish
Select optional backrest
Select your fixing type

B+G CONTOUR ALL IN ONE SETTING

Tables » Dining Height Tables

Colour & Finish Options

B+G USA Hardwood



Australian
Eucalyptus Dark Oil



Australian
Eucalyptus Light Oil

B+G USA Duraslat



Canyon



Outback

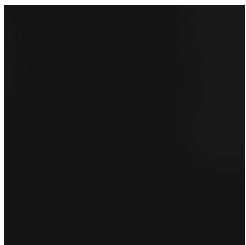


Plateau



Summit

B+G USA Powdercoats



Black



Bronze



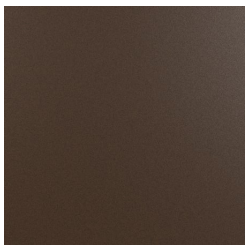
Carmine Red



Charcoal



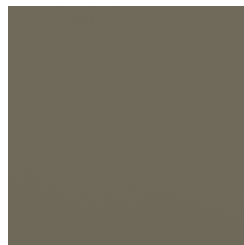
Claypot



Core Ten



Deep Ocean



Mangrove



Paper Bark



Pure Orange

B+G CONTOUR ALL IN ONE SETTING

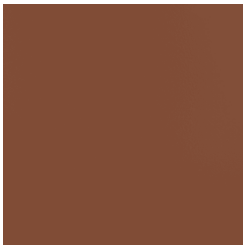
Tables » Dining Height Tables



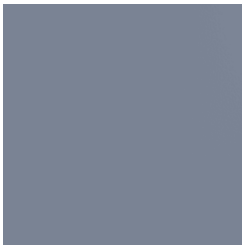
Silver Pearl



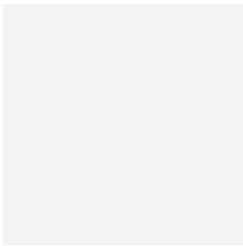
Sky Blue



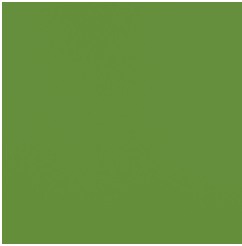
Territory Red



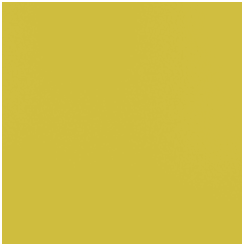
Wedgewood



White



Yellow Green



Zinc Yellow