

B+G CONTOUR BAG HOOK

Seating » Seats



Collection: **Contour**

Designed by: **Botton + Gardiner**

B+G CONTOUR BAG HOOK

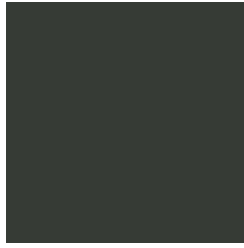
Seating » Seats



Galvanised Steel



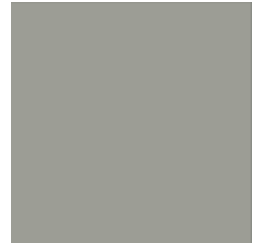
Core Powder-Coat
White Satin



Core Powder-Coat
Black Satin



Core Powder-Coat
Charcoal Satin



Core Powder-Coat
Palladium Silver Satin



Core Powder-Coat
Matt Black Matt



Core Powder-Coat
Pearl White Gloss



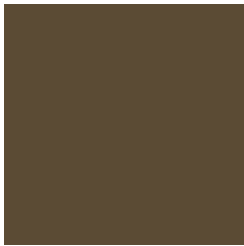
Solid Powder-Coat
Coffee Satin



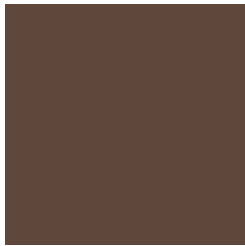
Solid Powder-Coat
Cove Satin



Solid Powder-Coat
Monument Matt



Solid Powder-Coat
Medium Bronze
Kinetic Flat



Textured Powder-
Coat Core Ten
Textured Metallic



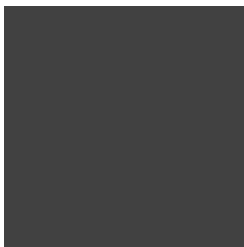
Textured Powder-
Coat Asteroid
Textured Metallic



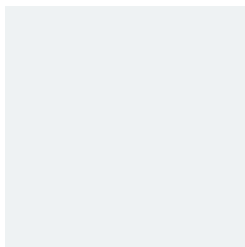
Textured Powder-
Coat Bass Textured
Metallic



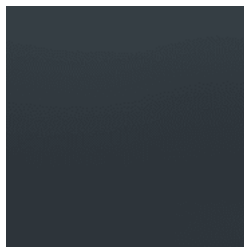
Textured Powder-
Coat Textura Black



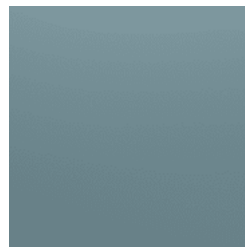
Textured Powder-
Coat Textura
Monument



Textured Powder-
Coat Textura White



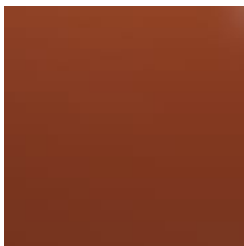
Signature Powder-
Coat Deep Ocean
Satin



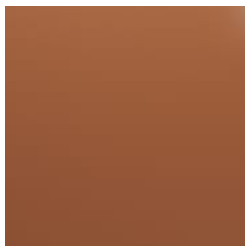
Signature Powder-
Coat Wedgewood
Satin



Signature Powder-
Coat Mangrove Satin



Signature Powder-
Coat Territory Red
Satin



Signature Powder-
Coat Claypot Satin



Signature Powder-
Coat Paperbark Satin



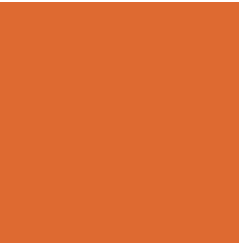
Bold Powder-Coat
Bondi Blue Gloss



Bold Powder-Coat
Leaf Satin

B+G CONTOUR BAG HOOK

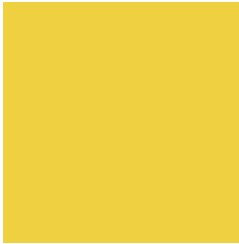
Seating » Seats



Bold Powder-Coat
Sensation Gloss



Bold Powder-Coat
Lobster Satin



Bold Powder-Coat
Moonlight Satin



B+G CONTOUR BAG HOOK

Seating » Seats

Contemporary bag hook with rounded details for convenient storage. Sturdy cast aluminium frame in 17 powder-coat colours or bead-blasted finish.

Description With unifying, considered design details, the Contour bench forms part of the contemporary Contour range of commercial outdoor furniture to suit diverse needs and environments. Featuring fluid forms that reference soft, rounded, naturally occurring shapes, the Contour bench complements the collection of seating and table settings that can be arranged in multiple ways to create engaging public spaces. With finishes that include hard-wearing Blackbutt or Duraslat™ battens with a cast aluminium frame in 17 powder-coat colours or a satin finish, Contour is made to stand the test of time.

Made In USA

Dimensions 2.75"W x 2.75"W x 1.77"H

Frame Cast aluminium in powder-coat or satin finish

Powder Coat Core
White (satin), Black (satin), Charcoal (satin), Silver Pearl (satin metallic), Coreten (textured)
Signature
Deep Ocean (satin), Wedgewood (satin), Mangrove (satin), Territory Red (matt), Claypot (satin), Paperbark (satin)
Bold
Sky Blue (satin), Yellow Green (satin), Pure Orange (satin), Carmine Red (satin), Zinc Yellow (satin)

Sustainability Recycled Materials
We locally source our aluminium. It means we know it uses recycled content and is 100% recyclable.
Low Pollutants
Our powder-coating process doesn't emit Volatile Organic Compounds (VOCs) and has Environmental Product Declarations (EPDs).

Warranty 5-year warranty. View the [warranty](#) for more details.

Lead Time 6-8 weeks

B+G CONTOUR BAG HOOK

Seating » Seats

Assembly & Delivery Shipped fully assembled on pallets.

Fixing Detail Fixed to underside of table.

How to Specify Select your finish

Care Instructions

Powder-Coat

Carefully remove any loose surface deposits with a wet sponge or soft bristled brush.

Use a soft (non-abrasive) cloth or brush and a diluted solution of mild detergent and warm water.

Ensure surfaces are thoroughly rinsed with clean fresh water after cleaning to remove all residues.

Never use thinners, abrasive cleaning agents, alcohol-based, acid or alkali cleaning agents.

Stainless Steel

Wash the surface regularly using warm water containing soap or mild detergents and rinse the surface with fresh water after cleaning.

When polishing the surface with a soft dry cloth to ensure all moisture is removed, follow the direction of the grain finish.

Use a brush or soft damp cloth to remove loose deposits. Use a cream cleanser and soft cloth for difficult deposits.

Use "Star Brite Rust Stain Remover" to remove tea staining and "Star Brite Chrome & Stainless Steel Polish" to protect the surface after cleaning.

Never use cleaners containing harsh abrasives or high bleach contents. Prolonged contact with chlorine-based cleaners will cause surface pitting, which cannot be repaired.

Never use abrasive materials such as scouring pads, steel wool or metallic scrapers.

For stubborn stains or where "deep cleaning" is required, a mild abrasive cleaner or rust remover may be required.

Customisable As this item is made to order locally, custom lengths are available on request.
